



Let's do it together

Photo / Oono Yoko



Photo / Morimoto Nobuo



Environmental Education Subcommittee

- Nature schools, *Satoyama* experience, field excursions (Elementary, junior/senior high, universities and vocational schools)
- Youth support activities
- Cooperation in lifelong learning, welfare and education
- Environmental education study meetings

Research

- Ministry of the Environment monitoring site 1000 (*Satoca* core site)
- Surveys of butterflies, fish, birds, Grey-faced Buzzard, plants, mushrooms, spiders, etc. and also water quality monitoring



Publicity

- Newsletter "Gotomaki Letters" (A4 size monthly, 12 pages)
- Event guide leaflets Distributed to elementary schools (11 issues/year)
- Exhibition and community center festivals, environment panel exhibitions (Exhibit 10+ times/year)
- Webpage management on the Internet Please search keyword "Shishitsuka"

Publications

- "Shishitsuka *Satoyama*: What's it like?" booklet
- "Living with Shishitsuka *Satoyama*" booklet
- "Living with Shishitsuka *Satoyama*: sequel" booklet

Satoyama junior detectives

- Let's play with nature in *satoyama* 4th Saturday 10:00-12:00

Local networking

- *Satoyama* spring meets
- *Ao-ya* chopsticks (replicating a traditional event)
- Harvest festivals
- Exchanges with local community
- *Satoyama* exchange meetings and workshops
- Welcoming visits and training
- Collaboration with Industries

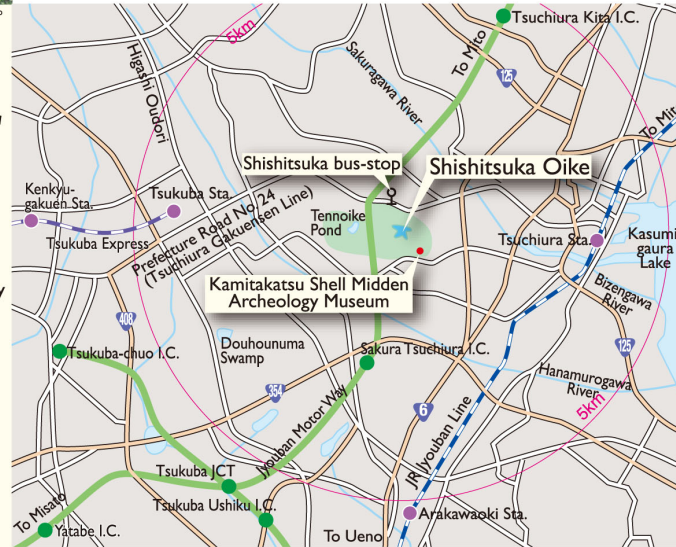


Study meetings & symposiums

- Saturday study meetings (Learn about *satoyama*)
- *Satoyama* conservation study (Learn about conservation measures)

Outreach to the wider society, including government

- Request for area conservation to Tsuchiura, Tsukuba City, Ibaraki Prefecture
- Request for "prefectural park" to Ibaraki Prefecture



Transportation Information:

Shishitsuka *Satoyama* sitsuate on the public Road No.24 (so called Tsuchiura Gakuenshen Line) approximately halfway between Tsuchiura Station (JR Jyouban Line) and Tsukuba Station (Tsukuba Express Line).

- From West side of Tsuchiura Station of JR Jyouban Line, take a bus run by Kanto Railway Bus and sign posted to Tsukuba Daigaku Chuuo and get off at Shishitsuka bus stop. Approx. 5 minutes' walk.
- From Tsukuba Centre at Tsukuba Station of Tsukuba Express, take a bus for Tsuchiura Station run by Kanto Railway Bus and get off at Shishitsuka bus stop. Approx. 5 minutes walk.

This leaflet is published with the support of the Eko-Ibaraki Charitable Trust.

Design / Gaigraphics

Certified Non-profit Organization for Nature Conservation and History Transmission of Shishitsuka Satoyama

Shishitsuka nature & history group

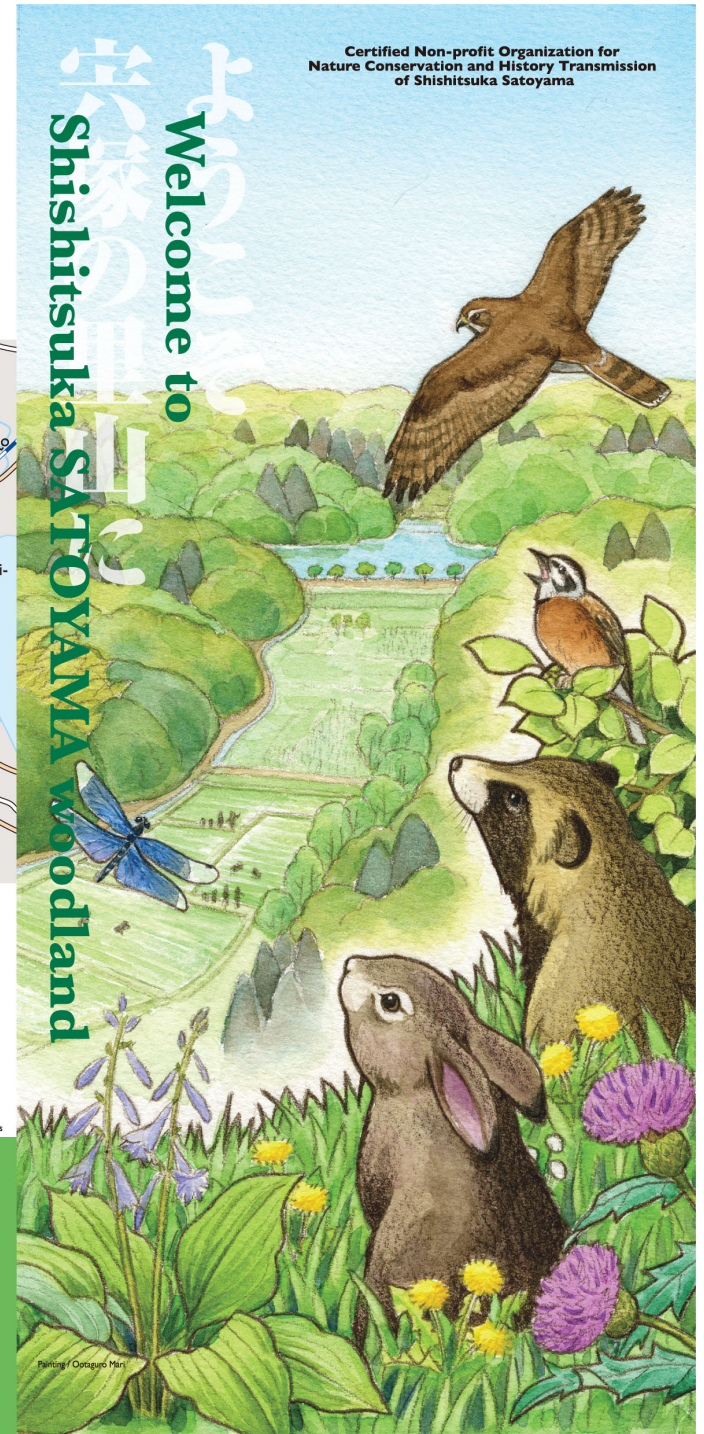
Anyone interested and approved can become a member of the organisation. Newsletter "Gotomaki Letters" (A4 size Monthly 12 pages) will be sent.

Welcome New Members !!!

- Yearly Membership Fee: more than Yen 1,500 per person
- Postal Payment: Account Number 00170-0-539787,

〒305-0023, Ibaraki-ken, Tsukuba-shi, Uenomuro 292-5 c/o Oikawa
E-Mail : sisitsuka@muf.biglobe.ne.jp
http://www.kasumigaura.net/ooike/

20151123-5000



Certified Non-profit Organization for Nature Conservation and History Transmission of Shishitsuka Satoyama

Welcome to Shishitsuka SATOYAMA woodland

Painting / Otaguro Min



Activities

Observation meetings

- Themed observations (1st Sunday) 9:30-12:00
- Saturday observations (Weekly) 9:00-12:00
- Wild Bird Society of Japan observation (3rd Saturday) 9:00-12:00

Satoyama volunteer work (Satoyama Sawayaka Corps)

- Maintenance
- Vegetation management in forest
- Mowing of walking paths
- Trash picking
- Waterway maintenance
- Mushroom cultivation
- Charcoal making (2nd and 4th Sunday) 9:30-12:00

Tambo School

- Rice growing in Yatsuda (learning & practice)
- Tambo School (rice paddy school) (Rice planting, harvesting, and scarecrow making)

Farms Friendship farm, Tsurugumi farm, Enoki farm, & orchard

- Field cultivation (growers wanted)
- Nora Club soybean cultivation, miso making

Shishitsuka rice ownership

- Support of Yatsuda growers
- Shishitsuka rice direct marketing

History Group

- Verbatim record: living with Satoyama
- Collection of historical and cultural information

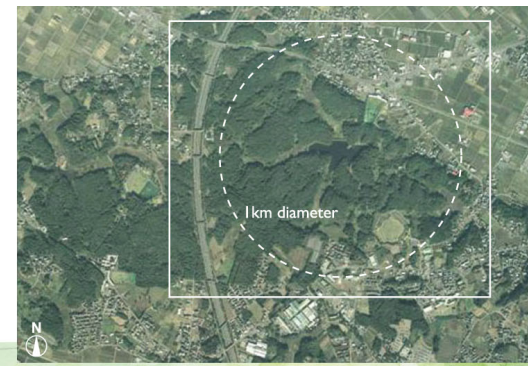
Pond conservation

- Removal of weed lotus
- Removal of non-native fish
- Preservation of foxnut (*Euryale ferox*) - Shishitsuka Oike stock

- Nationwide summits (1992-1994) (Foxnut Summit, Satoyama Summit, Grey-faced Buzzard Summit)
- Ponds Symposium (2004), Monitoring Symposium (2006)
- Shishitsuka nature & history group has won multiple awards: Water Environment Culture Award, Natural Environment Merit Environment Minister Award, Japan Nature Conservation Society - Swamp Grandmaster Award, Hometown Development Prime Minister's Award (2005), Ibaraki Prefecture Achievement Organization Governor Award (2006)

In Shishitsuka of Tsuchiura City, Ibaraki Prefecture, there lies a "satoyama" of about 100ha of varied terrain surrounding the "Shishitsuka Oike" pond, including wetland and grassland thickets, rice paddies and streams, which is home to many creatures. When the neighboring Tsukuba Tenno pond is included, the area doubles to 200ha. This satoyama is the largest of its kind between Tokyo and the foot of Mt Tsukuba.

The area being close to the city, many people can readily enjoy nature and relax. Cultural and historic sites represented by the Nationally Designated Historic Site Kamitakatsu shell mounds are also present, where the wisdom of "satoyama" is handed down to current generations. Since the Shishitsuka nature & history group's inception in 1989, it has been continuously active in conserving the valuable satoyama woodland, which was threatened by development plans, and in disseminating Japan's SATOYAMA initiative to the world from Shishitsuka.



Legend:

- Blue circle: Kofun tumuli
- Red circle: Shishitsuka nature & history group active sites
- Blue square: Archaeological sites

Labels on map include: To Mito, To Tsukuba Sta., Jyouban Motor Way, To Tsuchiura Sta., Satoyama friendship farm, Tambo School rice paddies, Alnus pond, Genbe mound, Shishitsuka bus-stop, Shishitsuka Post Office, Shishitsukasayuku, Guide Board, City Public Toilet, Orchard (Bairin), 1st parking lot, 2nd parking lot, Satoyama information center, Orchard, Foxnut pond, Uchi-Yatsu, Han-tame, Shishitsuka Oike, Tsurugumi farm, Enoki farm, Gorobe woodland, Jomon woodland, Satoyama Sawayaka Corps (volunteer) base, Hirutano-Yatsu, Inari-Yatsuda, Ike-nishi-wetland, Gotomaki-Yatsu, Seishi-kubo, Kurisaki archaeological site, Nationally Designated Historic Site Kamitakatsu Shell Midden Archeology Museum, Prefecture Road No. 24 (Tsuchiura Gakuensen Line).

Attribution:

Tsuchiura City : The 7th Tsuchiura City Total Planning - Water, Green, Leisure, Traffic Centre
 UNESCO : UNESCO Future Heritage
 Ibaraki Prefecture : Children's Lively Nature Experimental Field 100 Selection (Prohibited Area for Hunting)
 Department of Agriculture and Fishery : 100 Selected Ponds for Japan
 Department of Environment : Monitoring 1000 Satoyama (Country) Core Sites
 Department of Culture : Important Area for Cultural View concerning Agriculture, Forestry and Marine Industries
 Japan Insect Society : Important Area for Protection of Varieties of Insects etc.
 Asahi Shinbun LTD : 100 Selected Nature in Ibaraki
 Kanto Construction Cooperation Society : 100 Selection of Network Centres for Water and Green in Kanto